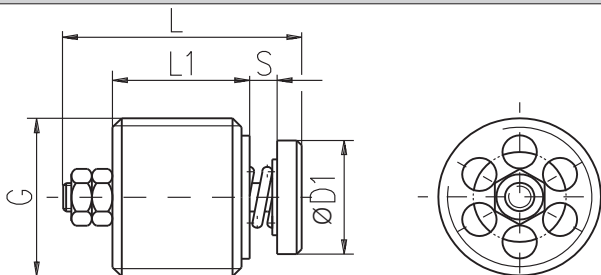


DESCRIPTION

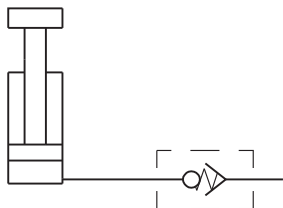
✓ Hose burst check valves for pipe mounting-HC870...
 ✓ Hose burst check valves prevent against an uncontrollable, accelerated movement of a loaded hydraulic actuator, when the back pressure is lost (as a result of damage or rupture in the pressurized line or pipe connections).
 The valve is screwed directly into the pressurized inlet port of the hydraulic actuator.

DIMENSIONS



TYPE	G	L	L ₁	ØD ₁
HC870-1/4	G1/4"	21	12	9,5
HC870-3/8	G3/8"	23	14	12
HC870-1/2	G1/2"	27	16	15
HC870-3/4	G3/4"	36	24	18,5

APPLICATIONS



ORDERING CODE

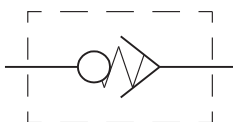
HC 870 - ***

Hose burst check valve
 Modification

Mounting thread: G1/4 -1/4
 G3/8 -3/8
 G1/2 -1/2
 G3/4 -3/4

*Other available threads: (metric) on request

SYMBOL



TECHNICAL DATA

Max. Pressure	320 bar
Rated flow - see characteristics	
Working liquid-hydraulic oils with characteristics:	
-viscosity	10...400 cSt
-degree of filtration	0,025 mm
-temperature	-20...+80°C

CHARACTERISTICS

